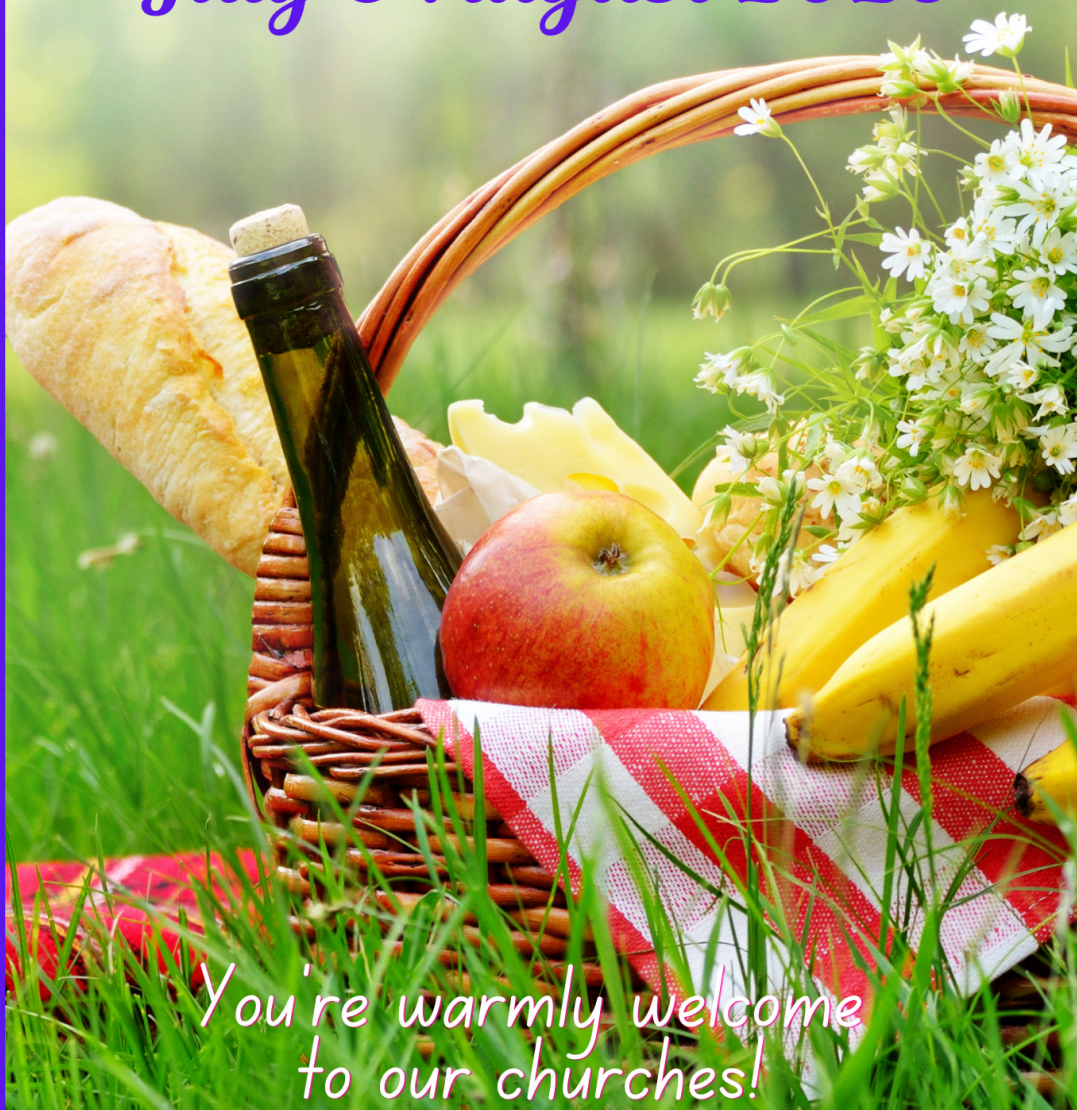




ST JOHN'S & ST MARTIN'S  
PARISH CHURCHES

# *Church Magazine* *July & August 2025*



*You're warmly welcome  
to our churches!*



## Building & Renovation Company

Quality building and carpentry work

Bespoke joinery

Painting and Decorating

Capel: 01293 871008

Email: info@lyneandco.co.uk

View examples of our building and joinery work at:

[www.lyneandco.co.uk](http://www.lyneandco.co.uk)



## MJP Plumbing & Heating Ltd

Will do any job from a tap washer to refitting your bathroom.

Boiler repairs and servicing.

Gas safe registered.

Contact Mike on 07768 844276  
or [mike@mjpplumbing.com](mailto:mike@mjpplumbing.com)



# Szabina

DESIGN & ALTERATIONS

## TAILORING AND ALTERATIONS

- RE-SIZE
- RE-STYLE
- RE-DESIGN







**Womenswear and Menswear Alterations,**  
Shortening, Lengthening, Let out, Take in,  
Zip replacement (coats, trousers, dresses, etc.)  
Prom / Wedding / Bridesmaid Dress Alterations  
Men's Suit and Trousers / Sleeves Alterations

### CURTAINS, BLINDS, HOME DECOR





Made to measure Curtains  
Roman Blinds  
Curtains Alterations  
Cushions cover



## 07960143283

[szabina.farago@gmail.com](mailto:szabina.farago@gmail.com)

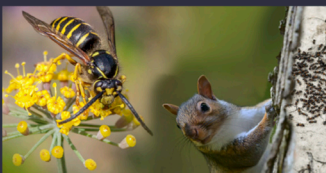


**COLLECT AND DELIVER**  
Whitley Manor Cottage, Bramley, GU5 0LL

## SOLVING PEST PROBLEMS OTHERS CAN'T - Since 2008

*From Gomshall*

ALL PESTS: Rats, mice, squirrels, wasps, woodworm, rabbits, deer fencing, loft insulation clearance



Surrey's highest rated pest control service on



- Ants 2 visits £172 +VAT
- Moles min 2 visits £60 +VAT per visit
- Rodents 3 visits £125 +VAT per visit
- Wasps £99 + Vat Guaranteed for the season

\*quote "Wondersh" for these prices

**For Homes & Businesses**

[www.pghbeegone.co.uk](http://www.pghbeegone.co.uk)

[sales@pghbeegone.co.uk](mailto:sales@pghbeegone.co.uk)

# 01483 273 478



**PGH**  
PEST PREVENTION

Hivegrove, Kings Court, Burrows Ln, Gomshall, GU5 9QE

PETER HIGGS

Visit our website



Proud members of  
**Checkatrade.com**  
Where reputation matters

**Beegone**  
LIVE BEE REMOVAL

Inclusion of an advertisement in this magazine does not imply that the Church endorses, or takes responsibility for, any product or service provided.



## July / August 2025

### Vicar's letter . . .

Dear Friends,

Lying back in the grass and looking up at the vapour trails in the sky, we sometimes wonder where those aeroplanes are going: holiday or business, beach sunshine or city sights? Summer is a time with schools 'off', when we leave home for the planned and promised summer holiday, excited and determined to enjoy some time away.

And of course, when we return, we are just as excited (at least that is the hope and expectation) to tell people where we have been, the amazing things that we have seen and done, and that they should go there as well.

Jesus told the disciples about the place which he was preparing for their future, and that one day they would follow in his footsteps. Inevitably, Thomas was the one to say, "We don't know where you are going, so how can we know the way?" Jesus replied with the well-known phrase, "I am the way, the truth, and the life."

How we long for our lives to be full of purpose and fun, to be exciting and useful and to leave a legacy that will somehow inspire others: "Oh," we sigh, "if only." Yet this is exactly what Jesus offers to us. His promise of life is true; his promise of knowing the way to fulfilment is true; his promise is that he knows the way and will lead us in it. No longer need we stay on the ground and dream. We can soar with God in a relationship that leads to a deeper understanding of life itself; and a promise of relationship with the God who made us, loves us and died for us. That is real freedom, to have our identity and future in the hands of God. That is a summer gift worth dreaming about!

Have a wonderful summer!

With love,

*David*

# July/August Diary

for St John's Church, Womersley

## July

|          |         |  |
|----------|---------|--|
| Tues 1   | 9.30am  | Morning Prayer   |
| Thurs 3  | 10.30am | Holy Communion (BCP)   |
| Sun 6    |         | <b>3<sup>rd</sup> SUNDAY AFTER TRINITY</b>   |
|          | 10am    | All-Age Worship  |
| Tues 8   | 9.30am  | Morning Prayer   |
| Thurs 10 | 10.30am | Morning Worship  |
| Sun 13   |         | <b>4<sup>th</sup> SUNDAY AFTER TRINITY</b>   |
|          | 8am     | Holy Communion (BCP)   |
|          | 10am    | Morning Worship  |
| Tues 15  | 9.30am  | Morning Prayer   |
| Thurs 17 | 10.30am | Holy Communion (CW)  |
| Sun 20   |         | <b>5<sup>th</sup> SUNDAY AFTER TRINITY</b>   |
|          | 10am    | Holy Communion (CW)  |
| Tues 22  | 9.30am  | Morning Prayer   |
| Thurs 24 |         | <b><u>No midweek service</u></b><br><b>(Seniors Summer Special in Lawnsmead - see p.9)</b> |
| Sun 27   |         | <b>6<sup>th</sup> SUNDAY AFTER TRINITY</b>   |
|          | 8am     | Holy Communion (BCP)   |
|          | 10am    | Morning Worship  |
| Tues 29  | 9.30am  | Morning Prayer   |
| Thurs 31 | 10.30am | Holy Communion (CW)  |

## August

|         |         |  |
|---------|---------|--|
| Sun 3   |         | <b>7<sup>th</sup> SUNDAY AFTER TRINITY</b>       |
|         | 10am    | Morning Worship ( <u>not</u> All-Age)            |
| Tues 5  | 9.30am  | Morning Prayer                                   |
| Thurs 7 | 10.30am | Holy Communion (BCP) <b><u>in Blackheath</u></b> |
| Sun 10  |         | <b>8<sup>th</sup> SUNDAY AFTER TRINITY</b>       |
|         | 8am     | Holy Communion (BCP)                             |
|         | 10am    | Morning Worship                                  |



# September

The Church Office (in The Vicarage) is open as follows:

**Tuesday - Thursday 9 am - 1 pm**

The office number is **01483 890266** (if outside office hours you may leave a message), or email [office@wonershchurch.org.uk](mailto:office@wonershchurch.org.uk).

Please submit articles for the September issue by **Monday 11<sup>th</sup> August.**

E-mail address for copy is [magazine@wonershchurch.org.uk](mailto:magazine@wonershchurch.org.uk).

For advertising, please contact John Gosden ([JohnGosden@aol.com](mailto:JohnGosden@aol.com) or tel.502076).

# Children and Families Update

At St. John's between now and September, Kids Church is all about taking the children outside to be in God's glorious creation. We will be basing ourselves in the idyllic setting of the vicarage garden, while also taking small groups across to our beautiful community vegetable gardens in the churchyard. We're so excited to be in this new outdoors phase and would love you to join us. For more details please email me – details at the end.

## Mum2Mum Bring and Buy Sale

**Saturday 5 July, 9.30-11am, Lawnsmead Hall**

Are your children outgrowing clothes and equipment faster than you can keep up? Do you want to do your bit for the planet by recycling?

**Sellers:** Book a table and turn your outgrown items into cash! It's the perfect chance to declutter before the holidays and connect with other local mums.

**Buyers:** Come and browse a wide selection of quality pre-loved items at fantastic prices - all in one place. Don't forget your old-fashioned money!

To book your table, or for more information, please email me (see below).

## Summer Chatterbox

**Thursdays 31 July and 14 August, 9.30-11am, Lawnsmead Hall**

This will run along the same lines as our much-loved termtime Chatterbox, but will also have some activities for older primary-school-aged siblings. £2 voluntary entry contribution.

## Mums, Bumps and Babies

**Mondays 28 July and 11 August, 10am-12pm, The Vicarage at St. John's**

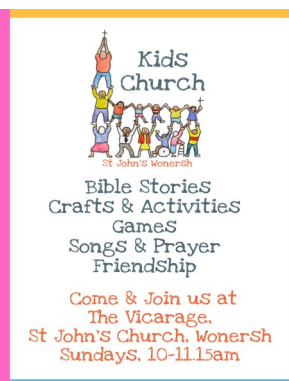
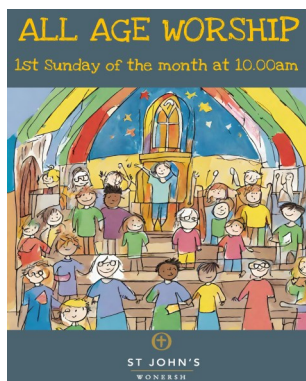
Do join us in this friendly, supportive, gentle space with your baby (up to crawling) for our summer holiday sessions if you're around.

Note: we run every termtime Monday at the above times.

And finally: advance notice of our upcoming and much-loved **Family Fun Day** in the vicarage garden on **Sunday 7 September, 11.45am-3pm**. More details to follow in the next edition.

With love, Clare ([clare@wonershchurch.org.uk](mailto:clare@wonershchurch.org.uk))

**NB: No All-Age Service on 3<sup>rd</sup> August because of the holidays.**



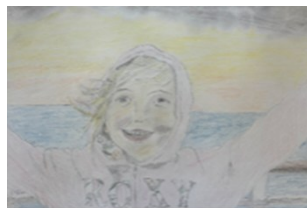


# News from our Village School

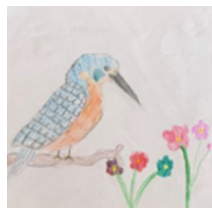
[wsg.surrey.sch.uk](http://wsg.surrey.sch.uk) | [@MediaWsg](https://www.instagram.com/MediaWsg)

**WSG**

We have been nurturing our artistic flair at school over the past few weeks. We entered the 2025 Young Artists Summer Show hosted by the Royal Academy. There were over 23,000 applicants and we can reveal that one of our children had her artwork chosen for the Online Gallery - many congratulations to Tilly! Her piece, 'Le pont', was carefully painted using acrylics on board. The RA loved her use of vibrant colours and the clever reflection of the moon on the water. The RA YASS (a free exhibition, well worth a visit) is open to the public from 15<sup>th</sup> July to 10<sup>th</sup> August. The online gallery will 'go live' on 15<sup>th</sup> July.



The school also entered an art competition hosted by Aldro School, and we were delighted that Isabelle was the Winner for Year 5 & 6 (*see left*) and Otilie 3<sup>rd</sup> for Year 1 & 2 (*see right*)!



And congratulations to our Year 5 children for their entries to the Art Bytes national inter-school visual arts competition. Three of our children were shortlisted to the final presentation in Hastings on the 12<sup>th</sup> June: Miah came first with her amazing Lion's Roar (*see right*). You can see all the entries from WSG on the [Art Bytes](https://www.artbytes.co.uk) website.





**ST JOHN'S  
WONDERS**

# JAZZ

**Saturday 12<sup>th</sup> July 2025  
7pm at St John's Church**

with  
*Liz Hayley's fabulous Jazz Ensemble*

**Tickets £15 incl. interval drinks**  
**[hospitality@wonershchurch.org.uk](mailto:hospitality@wonershchurch.org.uk)**  
**01483 890266**

(A donation from the proceeds will be made to Church Green Trust)

*why not arrive earlier & bring a picnic to share with friends on Church Green - we may have sunshine!!*

# Coming to God in Worship

Coming to worship God can be a big step for all of us. We want to feel comfortable in the environment, welcomed, at ease, and most especially, we need a language which helps us understand to whom we are talking and the reason why. That language is probably slightly different for all of us.

Within the parish we try, as far as possible, to provide a service for all preferences; and so we have some based on a traditional 'liturgical' format (phrases and prayers written down by church authorities), some more modern but still liturgical, and some informal.

We have therefore recently changed our 8am services in St John's to move to a more traditional footing. To show this in context, our Sunday services tend to be as follows:

## **St John's, Womersley**

8am (second and fourth Sundays) – Book of Common Prayer Communion

10am – Informal services, the first of the month being a service particularly geared towards all ages, including young children. The third Sunday of the month (and fifth, when applicable) is a Communion service with modern wording.

There is a 'Kids Church' in the vicarage during the 10am service, specifically catering for small children to have fun, share with each other, and learn about God.

## **St Martin's, Blackheath**

10am (first Sunday of the month) – A Communion service using a modern liturgy and with some responses which are sung.

6pm (third Sunday) – An Evensong service using the Book of Common Prayer and with elements led by the choir.

6pm (fourth Sunday) – 'Be still with God': thirty minutes of silent contemplation and prayer, following a short introduction.

---

## **Cre8tivity**

### **Do you find it difficult to prioritise time for creative projects?**

**Cre8tivity** is a small group meeting once a month at the Vicarage to encourage participation in the creative arts. Bring along any project you are working on (or would like to start). We have lots of assembled experience in knitting, sewing and crochet and would love to see what you are making. We can even offer help if you get stuck.

Dates for the Autumn are:

**Tuesday 9<sup>th</sup> September**

**Tuesday 14<sup>th</sup> October**

**Tuesday 11<sup>th</sup> November**

Each session will run from 8 - 9.30pm.

Bring a friend!

Further details from [community@womersleychurch.org.uk](mailto:community@womersleychurch.org.uk).





# Classic Estate Agency

(With Extra Sprinkles)

We're everything you need from a classic estate agency (decades of experience and local knowledge)—just with bigger ideas, scroll-stopping content, and sky-high visuals.

From high-end photography to killer reels, we give your home the exposure it deserves.

If you're thinking of moving this summer, let's have a chat.

01483 304 344

[shalford@chantriesandpewleys.com](mailto:shalford@chantriesandpewleys.com)

## WONERSH MEMORIAL HALL

Your village hall - for parties, classes, clubs and now skittles evenings!

Online booking: [wonershmemorialhall.com](http://wonershmemorialhall.com)

Call Hilary Solt 07931 516910

or Louise Healy 01483 898539

## R.A. ROBERTSON & SONS

High Street, Bramley.

Tel: Guildford 892207

[sales@robbo.co.uk](mailto:sales@robbo.co.uk)

TV - Domestic appliances - Sales & Service

## MASON VOLLER LIMITED

NICEIC registered

Electrical Contractors - Domestic and

Commercial - Installation & Repairs.

Builders Yard, Barton Road, Bramley, GU5 0EB

[info@masonvoller.co.uk](mailto:info@masonvoller.co.uk) 01483 572763

## RICHARD LEE

Painter & Decorator

Experienced in all aspects of wall coverings, special effects, interior and exterior decorating.

Over 30 years experience.

Tel: 01483 612055 / 07789685560 / 07717154392

## Tai Chi Class for Everyone on Monday evenings at Blackheath Village Hall

With Dr Luke Zhang who is Double Beijing Tai Chi Champion and retired medical doctor.

Tel: 07507275522

Email: [luke@taichiguildford.co.uk](mailto:luke@taichiguildford.co.uk)

Website: [taichiguildford.co.uk](http://taichiguildford.co.uk)

## Would YOU like to advertise in this space?

If so, ring John Gosden

on 01483 502076

or e-mail [johngosden@aol.com](mailto:johngosden@aol.com)



## Meet Louise Healy

Graham and I moved to Wonersh in 1992 with two daughters aged 3 and 18 months, and four things happened in fairly rapid succession – a friend of my parents from Shalford expressed surprise at our choice of village as ‘Wonersh is just some houses with a main road running through, not a proper village’; the previous occupants of our house told us it was good we had daughters as it was ideal for weddings, as we could walk to St John’s Church, park in the field and have a marquee in the garden; we had a third daughter; and lastly, I was informed that the occupants of our house traditionally became trustees of Wonersh Memorial Hall – which naively I believed and duly did!

So began my involvement in Wonersh village life, and not much later I became a trustee of Church Green in much the same way as described above. It was a great introduction to Wonersh.

The following years were largely taken up with family life and other interests but gradually I became more involved, delivering Meals on Wheels (with our youngest daughter in tow) which led to involvement with the Monday Lunch Club, one of my favourite times of the week as it is such a sociable friendly occasion and other people do the cooking! Also meeting other families through mother and toddler sessions, the playground, Girlguiding and Scouts, and being able to give a little back by helping to fundraise for playground refurbishments some time ago; and volunteering at Brownies, which I started doing in 2002, I thought for a year, but I am still doing Brownies now.

During the Covid lockdowns, Graham and I really began to appreciate just how lucky we are to be surrounded by beautiful countryside and lovely walks in all directions; and to live in a village where so many people are keen to look out for neighbours and help improve the village environment in so many ways.

In 2018 our eldest daughter duly got married at St John’s Church, cars parked in the field and we had a marquee in the garden. Since then, our four grandsons have all been christened at the church and we have started to attend services on Sunday.

So much goes on in the village – there are numerous clubs and societies, a proactive Parish Council, two churches, an environment group, WonCares, Lunch Club, Girlguiding and Scouts, playground fundraising, wonderful concerts at St John’s, films at the URC, a barn dance, skittles and comedy nights at the Memorial Hall (to name just a few). I would urge anyone who lives in the village to get involved - new members or volunteers are always welcome.

Graham and I have thoroughly enjoyed our 32 years in the village so far and hope for many more. Wonersh is so much more than ‘just some houses with a main road’: it is a great village community and we are fortunate to be part of it.

---

## Church Walking Group

The next walk will be on **Friday 12<sup>th</sup> September**. Further details available from Catherine Keech ([catherine@keechonline.com](mailto:catherine@keechonline.com)).



WONERSH + BLACKHEATH  
PARISH CHURCHES

**SENIORS SUMMER SPECIAL**  
**24<sup>th</sup> July 10.30-2.00pm**

**Cold Buffet, Games and  
featuring :  
Simon Ward-  
presenter of Premier  
Christian Radio Worship  
at Home. Sharing with us  
70 years of popular songs**



**Why not  
bring a  
friend  
and  
enjoy  
the day?**

Suggested donation £5

Contact:  
office@wonershchurch.org.uk



**Venue: Lawnsmead Hall**

ST JOHN'S & ST MARTIN'S  
PARISH CHURCHES

**Meals Ministry**

Are you recently bereaved? Facing serious illness?  
Do you have a new baby?  
Let us support you with some free home cooked  
meals delivered to your door



Please contact: clare@wonershchurch.org.uk  
or phone: 01483 890266

## North Guildford Food Bank



Despite the warmer weather, the Food Bank is still needed. Even though we are into the summer months now, families will be struggling, particularly during the school holidays as the children are not getting a midday meal at school. Due to your generosity, we are able to help them with both fuel payments and food.

This month we need:

**Biscuits**

**Tinned tomatoes**

**Jam**

**Tinned fish**

**Toothbrushes (adults and children)**

In addition, we always need **strong carrier bags**.

Donated items can be left in the foyer of St John's church, or in the crate on Rosie Couzens' doorstep (**10 Little Orchard Way, Shalford, GU4 8JY**).

If you would rather make a financial donation, please refer to our website: [northguildfordfoodbank.co.uk](http://northguildfordfoodbank.co.uk), which lists the ways you can donate (if you are a taxpayer, Gift Aid can be claimed by the Food Bank on personal donations).

As always, thank you for your continued support.

# Blackheath Focus

## July/August 2025



### Services at St Martin's

|                                  |  |                   |
|----------------------------------|--|-------------------|
| Sunday 6 <sup>th</sup> July      | Sung Holy Communion                                | 10am              |
| Sunday 13 <sup>th</sup> July     | <i>Services in Wonersh</i>                         | <i>8am / 10am</i> |
| Sunday 20 <sup>th</sup> July     | Choral Evensong                                    | 6pm               |
| Sunday 27 <sup>th</sup> July     | 'Be Still with God'                                | 6pm               |
| Sunday 3 <sup>rd</sup> August    | Sung Holy Communion                                | 10am              |
| Thursday 7 <sup>th</sup> August  | Midweek Holy Communion<br>(relocated from Wonersh) | 10.30am           |
| Sunday 10 <sup>th</sup> August   | <i>Services in Wonersh</i>                         | <i>8am / 10am</i> |
| Sunday 17 <sup>th</sup> August   | Choral Evensong                                    | 6pm               |
| Sunday 24 <sup>th</sup> August   | 'Be Still with God'                                | 6pm               |
| Sunday 31 <sup>st</sup> August   | <i>Service in Wonersh</i>                          | <i>10am</i>       |
| Sunday 7 <sup>th</sup> September | Sung Holy Communion                                | 10am              |

### Blackheath Care Team

The Blackheath Care Team has a pool of volunteers for residents in Blackheath who need a lift to hospital appointments, or dentist or surgery appointments; the volunteers can also collect prescriptions, etc.

If you need assistance,  
please contact Penny Kirkwood on **07973 836987** (phone or text),  
or otherwise Alex Jones on **07810 486521**.

We are happy to help!



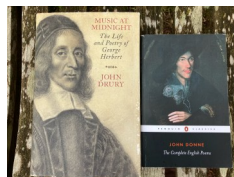
# **Two Paths to the Sacred: Indigenous Wisdom meets Metaphysical Verse St Augustine's Abbey, Chilworth, GU4 8QR**

This September, St Augustine's Abbey launches *Cultural Conversations: Mornings & Evenings of Enrichment* - a new initiative inviting the public to engage with spiritual traditions through two inspiring events.

On **Saturday 6<sup>th</sup> September, 10am - 12 noon**, the Abbey hosts *'Discover Indigenous Spirituality - A Special Study Morning'* with Sheila Longman. This session will explore sacred traditions from tribal cultures, including a moving documentary on the Māori and live reflections from Jeremy Marks on Native American spirituality. It's a chance to investigate how diverse cultures connect with the divine.



On **Thursday 25<sup>th</sup> September, 7.30 - 9.15pm**, *'Mysteries of the Metaphysicals - A Poetry Evening'* will celebrate the timeless works of metaphysical poets John Donne and George Herbert. Led by Peter Thompson, Dr Jo Russell and Sheila Longman, the evening will explore how poetry expresses faith, doubt and devotion.



Both events will be held in the peaceful **Assisi Room**, with free parking and refreshments included. Tickets are **£10** via [ticketsource.co.uk](https://www.ticketsource.co.uk) (search 'St Augustine's Abbey'). All proceeds support the Abbey Church organ conservation.

Visit us online at [www.chilworthbenedictines.com](http://www.chilworthbenedictines.com).

## **Ask the monks to pray for you**

Ask online at  
[www.chilworthbenedictines.com](http://www.chilworthbenedictines.com)



Chilworth, England  
**ST AUGUSTINE'S ABBEY**  
A Roman Catholic Benedictine Monastery

# Village News

## Wonersh & District Garden Club

During the Summer months, most of our activities are for members only.

Please contact Hilary Goodridge: [hilarygoodridge@ymail.com](mailto:hilarygoodridge@ymail.com) or 01483 535108 for more information regarding our planned garden visits.

Our talks start again from 1<sup>st</sup> October.



## Wonersh United Reformed Church

Minister: Revd Graham Hoslett (tel: 07425 569807)

Facebook - Wonersh United Reformed Church

### July/August 2025 - News

Hello from Wonersh URC.

Please see below our activities during the next two months, to which all are welcome. We also have **Tea@3** taking place every Thursday afternoon at 3pm at the church, with tea, coffee, cake and chat - always a good time.

For more information on any of the activities, please give me a ring or message on 07425 569807, or see our Facebook page.

Have a blessed summer.

*Revd Graham Hoslett*

| DATES                             | DETAILS  |
|-----------------------------------|--|
| Wednesday, 2 <sup>nd</sup> July   | 7pm: Film Club - <b>‘What We Did on Our Holiday’</b>         |
| Sunday, 6 <sup>th</sup> July      | <i>No Service</i>  |
| Wednesday, 9 <sup>th</sup> July   | 7pm: How to Pray   |
| Sunday, 13 <sup>th</sup> July     | 10.30am: Communion - Revd Graham Hoslett<br>+ Church Meeting |
| Wednesday, 16 <sup>th</sup> July  | 7pm: Taizé Service - Revd Graham Hoslett                     |
| Sunday, 20 <sup>th</sup> July     | 10.30am: Livestreamed Service                                |
| Sunday, 27 <sup>th</sup> July     | 10.30am: Recorded Service - Revd Graham Hoslett              |
| Sunday, 3 <sup>rd</sup> August    | 10.30am: Livestreamed Service, Communion                     |
| Wednesday, 6 <sup>th</sup> August | 7pm: Film Club (film TBA)                                    |
| Sunday, 10 <sup>th</sup> August   | 10.30am: Livestreamed Service                                |
| Sunday, 17 <sup>th</sup> August   | 10.30am: Recorded Service - Revd Graham Hoslett              |
| Sunday, 24 <sup>th</sup> August   | 10.30am: Livestreamed Service                                |
| Sunday, 31 <sup>st</sup> August   | 10.30am: Livestreamed Service                                |

# Wonersh History Society

## Tuesday 15<sup>th</sup> July, 8pm

### Wonersh Memorial Hall



In 1884 Emilia Margaret Guthrie acquired 69 acres of Chinthurst Hill but it was not until 1893, at the suggestion of Gertrude Jekyll, that she commissioned Edwin Lutyens to build a house there. Jekyll laid out the gardens. Since then the house has had a chequered history including being divided into 3 parts. Anna Hunter, who was instrumental in its restoration into a single dwelling, will tell its fascinating story at our next meeting.

Guests are welcome for a fee of £3. Find out more about the Society, including how to join, at [www.wonershhistory.co.uk](http://www.wonershhistory.co.uk).

## U3A Wonersh & District

Your local U3A, covering Blackheath, Bramley, Chilworth,  
Shalford, Shamley Green and Wonersh



### What's on in July 2025 – join us for these activities

|          |  |   |  |
|----------|--|---|--|
| Tues 1   | <b>Tai Chi</b> (2 groups): Lawnsmead Hall                    | Thurs 17  | <b>Latin:</b> Godalming                      |
| Wed 2    | <b>Table Tennis:</b> Bramley Village Hall                    |   | <b>Pottery:</b> Farley Green                 |
|          | <b>Explore Churches:</b> Wansborough Gt Barn                 | Fri 18  | <b>French:</b> Godalming                     |
| Thurs 3  | <b>Mah Jong:</b> Bramley Library Room                        | Mon 21  | (No Pilates)                                 |
|          | <b>Latin:</b> Godalming                                      | Tues 22   | <b>Tai Chi</b> (2 groups): Lawnsmead Hall    |
|          | <b>Pottery:</b> Farley Green                                 | Wed 23  | <b>Table Tennis:</b> Bramley Village Hall    |
| Fri 4    | <b>French:</b> Godalming                                     | Thurs 24  | <b>Line Dancing:</b> Shalford Upper Hall     |
| Mon 7    | <b>Pilates:</b> Lawnsmead Hall, Wonersh                      |   | <b>Latin:</b> Godalming                      |
| Tues 8   | <b>Tai Chi</b> (2 groups): Lawnsmead Hall                    |   | <b>Speaker's Corner:</b> Stephen Chater      |
| Wed 9    | <b>Explore London:</b> Spitfields discovery                  |   | Lawnsmead Hall                               |
|          | <b>Table Tennis:</b> Bramley Village                         | Fri 25  | <b>Art:</b> Bramley Village Hall             |
| Thurs 10 | <b>Line Dancing:</b> Shalford Upper Hall                     | Mon 28  | <b>Pilates:</b> Lawnsmead Hall, Wonersh      |
|          | <b>Latin:</b> Godalming                                      |   | <b>Coffee Morning:</b> Percy Arms, Chilworth |
| Mon 14   | <b>Pilates:</b> Lawnsmead Hall, Wonersh                      | Wed 30  | <b>Outing:</b> River Trip, Marlow to Henley  |
|          | <b>Book Club:</b> Selwyn Room, Parish Church                 |   | <b>Table Tennis:</b> Bramley Village Hall    |
| Tues 15  | <b>Tai Chi</b> (2 groups): Lawnsmead Hall                    | <div> <p><i>Join us for some very interesting talks, visits and activities. Newcomers are welcome.</i></p> <p><i>For further details, please visit</i></p> <p><a href="https://u3asites.org.uk/wonersh">https://u3asites.org.uk/wonersh</a></p> <p><i>or phone Jacqui on 07814 379294.</i></p> </div> |  |
|          | <b>Long Walk:</b> meet Watts Gallery, Compton upper car park |   |  |
| Wed 16   | <b>Table Tennis:</b> Bramley Village Hall                    |   |  |
|          | <b>Summer BBQ:</b> Wonersh Cricket Pavilion                  |   |  |

# Wonersh Cricket Club



The start of the cricket season has been blessed by good weather, and excellent cricket. After 6 matches, Wonersh are top of the Surrey Downs League Division 3, with some outstanding individual contributions. Rupert Miller has top scored so far this season, with an unbeaten 141, and an average over 6 matches of 109.67; although Rupert is behind Christian Cottam on total runs scored. Local rivalries have resumed in the Surrey Village Midweek Cup on Wednesday and Thursday evenings, with the Hundred ball format being played. Please do come and join us and have a drink on the balcony, or something from the BBQ, whenever you see a match on. We have a big focus on developing younger players and our teams are really seeing the benefit. We still have some spaces on our junior programme.

Also we would like to hear from anyone who would like to get involved with our local Cricket Club. In particular we are looking for a new Treasurer - the role is not as onerous as you might think as we have an online accounting platform to do all the hard work! We would also welcome anyone interested in helping Score, Umpire or developing a ladies cricket team.

Volunteers please contact [secretary@wonershcc.co.uk](mailto:secretary@wonershcc.co.uk).



Please visit [www.stcatherines.info](http://www.stcatherines.info) for more details.



## BABY CATS | SUMMER EXTRAVAGANZA

**Friday 4<sup>th</sup> July | For 0-4 yrs**

Come and join the fun at our Summer celebration.

9.30 - 10.30am | St Cats Prep Gym

There is no charge, but please book your place  
on [tinyurl.com/mputauka](http://tinyurl.com/mputauka).



## **Free Coffee Concert** **Thursday 7<sup>th</sup> August, 10.30am - 12pm** **Guildford Cathedral, GU2 7UP**

We look forward to welcoming pianist **Yoon Seok Shin** back to the Cathedral. Yoon has developed a busy international career as a solo recitalist, concerto soloist and chamber musician. Come and listen as he plays music by well-known composers Haydn, Schubert, Handel, Bach and Liszt.

Coffee will be served from 10:30am, with the concert starting promptly at **11:15am**.

For more details of events at the Cathedral, visit [guildford-cathedral.org/events](http://guildford-cathedral.org/events).





## Memory Lane

Memory Lane is a group of volunteers who share their experience with full-time carers and their partners who are experiencing dementia or loss of memory. Their regular meetings are interspersed each month with *Walk in the Park* to enjoy a stroll, chat and even a sing-song led by professional singers, with Ann Beresford accompanying on one of her many instruments.

Knowle Park, down Knowle Lane in Cranleigh, literally came alive last month with the initial introduction of the Indian Geese fledglings parading across the lake. Shortly after followed the long-awaited appearance of two cygnets with the resident swans. The coots were taking a little longer but should be off their nests in July to join the others.



*Walk in the Park* takes place every second Monday each month, and anyone who may be feeling lonely or needs cheering up is welcomed warmly by the Memory Lane team. It really is a stroll, which sometimes includes those in wheelchairs who are also able to see the information boards that help to explain what to look out for and future developments planned by the amazing Park team of volunteers. Back at the kiosks, feeling exhilarated and comforted from the walk, is the opportune time to group together for further chatting - or even joining in the singing between sips of coffee or licks of ice-cream!



The hour or so really brings so much joy to everyone, no matter what the weather. It has been known for folks on one wet day to shelter under trees to join together in "Singing in the Rain".

*Walk in the Park* is arranged for anyone who may be feeling nostalgic. You would be welcome to join us at **10.30am on Monday 14<sup>th</sup> July** or, of course, any second Monday each month.

Memory Lane meetings in the Cranleigh Arts Centre in July will be as usual from **2.15pm** on the first and third Monday (7<sup>th</sup> and 21<sup>st</sup> July). With August being holiday time there will be just one meeting, on **18<sup>th</sup> August**, following *Walk in the Park* on Monday 11<sup>th</sup> the previous week.

For further details on all Memory Lane activities, please telephone Memory Lane on **01483 274398** or email [mamwild@aol.com](mailto:mamwild@aol.com).



## Your New Hospice

Last year, local charity Phyllis Tuckwell launched an appeal to raise £6 million to build a new Hospice. One year on, thanks to the generosity of our incredible community, there is just £400,000 left to raise! Once finished, it will enable Phyllis Tuckwell to offer its specialist Hospice Care to many more people in West Surrey and North-East Hampshire who need its help.

Any contribution you could make would be very much appreciated. To make a donation, visit [www.pth.org.uk/givetoday](http://www.pth.org.uk/givetoday) or call **01252 729446**.

**Twinkle toes**  
 Mobile foot care clinic

MEMBER OF  
  
 Kirsten Hall MCFHP MAFHP

07592 853178  
 twinkletoesfeet@outlook.com

• All in the comfort of your home •

**LAWNSMEAD HALL**  
 A Victorian building, extensively restored, with well-appointed and comfortable facilities.

Located in the centre of Wonersh, looking out over the cricket green.

To book either the Main Hall or the smaller Turner Room, contact the Parish Administrator on **01483 890266**, or email [office@wonershchurch.org.uk](mailto:office@wonershchurch.org.uk)

**MULLARD**  
 FUNERALS — GODALMING SINCE 1897

INDEPENDENT FUNERAL DIRECTORS  
 & MEMORIAL MASONS



- 24 Hour professional & personal service
- Pre paid & pre arranged funerals
- Private chapels of rest

01483 860279 • [www.mullards.uk](http://www.mullards.uk)  
 121-123 High Street, Godalming  
 Surrey, GU7 1AG

**FM**

 **Seymours**

**TOP 6 TIPS TO SELL YOUR HOME**  
 in Wonersh & Blackheath

- Strong first impressions**  
 A tidy front garden & driveway goes a long way.
- Neutral tones. Natural light**  
 Makes rooms appear more bright, spacious and inviting.
- Uncluttered rooms**  
 Makes it easier for buyers to imagine their own plans.
- Fresh Flowers**  
 Sets the tone for a well cared for home and adds energy.
- Subtle touches**  
 With a welcoming scent. It can create a positive emotional response.
- Summer fair footfall**  
 Take advantage of the increased footfall with a 'For Sale' board.

**SPEAK TO US FOR TAILORED ADVICE ON SELLING YOUR HOME**

01483 576833 | [sales@seymours-guildford.co.uk](mailto:sales@seymours-guildford.co.uk) | 217 High Street, Guildford, GU1 3BJ

## **Manager urgently needed for the Villages Wednesday Club Do you know anyone who could help?**

We are **urgently** looking for a new manager to run the Villages Wednesday Club day centre at Blunden Court in Bramley (for more information see [www.fourvillages.co.uk](http://www.fourvillages.co.uk)). We provide a day out each week for elderly people living in the local community who are a bit lonely and isolated. They have a chat over morning coffee, a cooked lunch, afternoon tea and entertainment, and this gives their carers a day off too. The job of Manager is interesting and varied, and he or she will be helping to provide a fantastic service to improve the lives of local elderly people.

As Manager, they would work with the Assistant Manager and a great team of volunteers to provide a warm, friendly and caring environment. The role involves organising the volunteers and activities, whilst maintaining simple records (such as registers, rotas and petty cash), as well as occasional admin such as updating risk assessments, etc. They would get to know the members and liaise with their families and health professionals as necessary. The role may suit someone who has nursing or care experience or has worked with elderly people, but neither of these are essential and it's more important that we find someone who is friendly, caring, and practical!

Whilst the role is voluntary (not salaried) the Manager would be paid a retainer each quarter; they would not be expected to attend the day centre every week. The usual practice is to alternate weeks with our very able Assistant Manager - our wonderful team of volunteers are a great help too!

For more details, please contact **Jenny Warner** on 01483 894795  
or **Sue Searle** on 07771 558541, or email [manager@fourvillages.co.uk](mailto:manager@fourvillages.co.uk).

---

## **Summer Reading Challenge Saturday 5<sup>th</sup> July - Saturday 13<sup>th</sup> September**



The Summer Reading Challenge is aimed at primary school children, but children and teens of all ages can sign up for free at their local library from Saturday 5<sup>th</sup> July. The aim of the Challenge is to keep children reading over the summer holidays when there can sometimes be a 'reading dip'.

This year's theme is '**Story Garden – Adventures in Nature and the Great Outdoors**', which will inspire children to tap into a world of imagination through reading, exploring the magical connection between storytelling and nature.

The Challenge will be launched at Newlands Corner on **Saturday 5<sup>th</sup> July** between 11am and 2pm. Author Lucy Reynolds and storyteller John Kirk will be coming along for some outdoor-inspired events, and lots of garden-themed activities with our partners from [Surrey Wildlife Trust](#) and [Surrey Hills Society](#). Book a place via the [Surrey Libraries](#) website, or just drop by to join in the fun!



## **Free Guided Walks of Guildford with the Guildford Town Guides**

Until September, **Visit Guildford** is hosting free guided walks, where those attending will be taken across the town, learning about the story behind its most interesting landmarks.

A spokesperson for Visit Guildford said: "Surrey's ancient capital, situated on the banks of the River Wey, has a history stretching back over 1,000 years. Starting at Tunsgate Arch, this half-mile walk in the town centre will take you past some of the most interesting buildings."

Those interested are advised to wear suitable clothing as the majority of the tour will be outside in areas with limited shelter.

The guided walk will take place on the following days, beginning at **11am** at Tunsgate Arch on the High Street:

**July: 1<sup>st</sup>, 5<sup>th</sup>, 8<sup>th</sup>, 12<sup>th</sup>, 15<sup>th</sup>, 20<sup>th</sup>, 24<sup>th</sup> and 27<sup>th</sup>**

**August: 2<sup>nd</sup>, 3<sup>rd</sup>, 10<sup>th</sup>, 12<sup>th</sup>, 16<sup>th</sup>, 17<sup>th</sup>, 23<sup>rd</sup>, 28<sup>th</sup> and 31<sup>st</sup>**

**September: 4<sup>th</sup>, 6<sup>th</sup>, 9<sup>th</sup>, 13<sup>th</sup>, 14<sup>th</sup>, 16<sup>th</sup>, 18<sup>th</sup>, 21<sup>st</sup>, 23<sup>rd</sup>, 25<sup>th</sup> and 28<sup>th</sup>**

You can book your spot on your preferred date on the [Visit Guildford](#) website.

Guided walks focused around topics such as Guildford's pubs and inns, Alan Turing, the town in the Georgian era and Lewis Carroll are also being hosted across the summer - see website (as above) for details.

---

## **News from Bramley & Grafham**

Stuart White would like to thank everybody who came to the Bramley Music concert with the amazing MZ Duo in St Andrew's Church, Grafham, on Sunday 8<sup>th</sup> June. It was a most enjoyable occasion which raised over £350 towards the St Andrew's Restoration Fund.

But the fundraising doesn't stop there. Stuart will be taking on an epic personal challenge this August - cycling from Land's End to John O'Groats in 21 days (and not on an electric bike!) - again in aid of the Restoration Fund. A JustGiving page will be available soon for donations - email [stuartwhite@waitrose.com](mailto:stuartwhite@waitrose.com) for details.

And a date for your diary: the next Bramley Music concert, in aid of the Meath Epilepsy Charity, will be on **Saturday 4<sup>th</sup> October** at **7pm** in Holy Trinity Church, Bramley - a **Celebrity Piano Recital** with the world-renowned **Piers Lane**.

---

## **Reminder for Magazine Deliverers!**

From the last week of August (i.e. the next issue), your bundle(s) of magazines will be available for collection each month from weatherproof boxes outside the church doors. You will be notified when they are ready - please try to collect and deliver them as soon as possible, so that everyone in the parish receives a copy before the beginning of the next month.

Any problems, please contact Deirdre as usual.

# The Horsham to Guildford Direct Railway

12<sup>th</sup> June 2025 marked the sixtieth anniversary of the closure of the Horsham to Guildford Direct Railway in 1965, bringing with it the demise of Bramley & Wonersh station.

The Horsham to Guildford branch line had been opened almost 100 years previously when regular services started in October 1865. The establishment of the line had been promoted by a group of local businessmen keen to get their products speedily to the growing markets in Guildford, Horsham and beyond. An Act of Parliament for the building of the railway was passed on 6<sup>th</sup> August 1860, construction started in 1862 and the line finally opened on 2<sup>nd</sup> October 1865.

At each end of the line (near Guildford, and at Horsham) trains needed to run over tracks owned and operated by other railway companies. At the Guildford end it ran over the main Portsmouth line to Peasmarsh Junction. Thereafter, new track took the line to newly-built stations at Bramley & Wonersh, Cranleigh (now Stocklund Square), Baynards, Rudgwick and Slinfold. After Slinfold it joined the Mid-Sussex line at Christ's Hospital before the final run into Horsham.

By the 1950s the line was suffering from falling passenger numbers, partly because of the growth of private motoring, but also the increasing volume of freight being moved by road rather than rail. The goods service closed in 1962, and the passenger service fell victim to the infamous Dr Beeching when his report identified it for closure, which finally occurred on Saturday 12<sup>th</sup> June 1965. The image (right) shows one of the last trains through Bramley & Wonersh.



One significant historical event is worthy of mention. On 16<sup>th</sup> December 1942 a train packed with Christmas shoppers was leaving Bramley & Wonersh station when it was attacked by a German Dornier aircraft. The plane fired its machine gun at the train and dropped a bomb that exploded on the embankment, narrowly missing the train. The train was badly damaged (see image below, from the BBC's WW2 People's War) and eight people, including the driver and guard, were killed. The event is commemorated by a plaque in the restored waiting area at the station.





# Wonersh Village Fair and events over the years



**Don't miss the Wonersh Traditional Fair in 2025!**  
**Sunday 6<sup>th</sup> July at 12:30pm**

Special thanks to Wonersh History Society for finding all these pictures

Sponsored by:





|  |                     |  |
|--|---------------------|--|
| <b>VICAR: Rev'd David Peters</b>       | <b>07521 090179</b> | <a href="mailto:vicar@wonershchurch.org.uk">vicar@wonershchurch.org.uk</a>   |
| <b>CHURCH OFFICE</b>                   | <b>01483 890266</b> | <a href="mailto:office@wonershchurch.org.uk">office@wonershchurch.org.uk</a> |
| <b>(for all other church contacts)</b> |                     |  |

## Village Contact Points

**Wonersh & Shamley Green CE Primary School** **892345**

Headteacher: Mr Tim Cheesman

**Police:** Emergency **999** or **112** Non-emergency **101**

Safer Neighbourhood Team

[waverley@surrey.police.uk](mailto:waverley@surrey.police.uk)

Inspector Rob Brian (ID 3048)

[Rob.Brian@surrey.police.uk](mailto:Rob.Brian@surrey.police.uk)

Sergeant Phil Bayman (ID 40264)

[Phil.Bayman@surrey.police.uk](mailto:Phil.Bayman@surrey.police.uk)

PC Gavin Greenaway (ID 40221)

[Gavin.Greenaway@surrey.police.uk](mailto:Gavin.Greenaway@surrey.police.uk)

PC Billy Dann

[Billy.Dann2@surrey.police.uk](mailto:Billy.Dann2@surrey.police.uk)

**Waverley Borough Councillor:** Michael Goodridge MBE **535108**

[michael.goodridge@waverley.gov.uk](mailto:michael.goodridge@waverley.gov.uk)

**Lawnsmead Hall:** Church Office

**890266**

**Memorial Hall:** Hilary Solt

**07931 516910**

**WonCares** (Monday to Friday)

**894004**

**Wonersh Connections**

[www.wonershconnections.org](http://www.wonershconnections.org)

### 1st Wonersh Scout Group



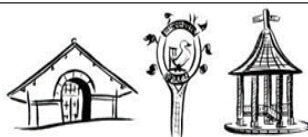
**Group Scout Leader:** Robin Beeson **07766 641777**

email: [1stwonershgsl@gmail.com](mailto:1stwonershgsl@gmail.com)

## Wonersh Parish Council

BLACKHEATH • SHAMLEY GREEN • WONERSH

[www.wonershparish.org](http://www.wonershparish.org)



### Your councillors:

Please telephone any of us if you have a local issue you would like to discuss.

The Parish Office, located at Wonersh Sports Pavilion, is open by appointment - call the Parish Clerk (Lisa Davison) on **892601** or email [clerk@wonershparish.org](mailto:clerk@wonershparish.org).

Email and telephone messages are monitored Monday to Thursday.

|                        |              |
|------------------------|--------------|
| Anthony Shutes (Chair) | 890831       |
| Max Gibbs              | 07766 994005 |
| Chris Howard           | 07879 841000 |
| Ben Knight             | 07966 269182 |
| Stephen Lavender       | 07966 533951 |
| Rob Merriman           | 07711 654699 |
| Kat Parkinson          | 07773 441164 |
| Kevin Sloan            | 898472       |
| George Sobek           | 07354 809130 |



# Birtley House Nursing Home

*Exceptional care in an idyllic setting - since 1932*

Independent living, respite care, nursing care, long term care,  
and end of life care within a beautiful Surrey Hills landscape

[www.birtleyhouse.co.uk](http://www.birtleyhouse.co.uk) • Birtley Road, Bramley, GU5 0LB • 01483 892 055

**Bullimores**



ESTABLISHED  
1928

## Accountants for Life

- Tax
- Accounts
- Probate
- Inheritance Tax & Executorship

Bullimores LLP licensed to carry out the reserved legal activity of non-contentious probate in England & Wales by the ICAEW



For advice, call us on: **01306 880880** | Email: [partners@bullimores.co.uk](mailto:partners@bullimores.co.uk) | Web: [www.bullimores.co.uk](http://www.bullimores.co.uk)



## ABACUS



**Wonersh  
Pest Control**  
and



## Wonersh Wasp Control

**Pest Control you can count on**  
**Telephone: 01483 299307**

Inclusion of an advertisement in this magazine does not imply that the Church endorses, or takes responsibility for, any product or service provided.