



ST JOHN'S & ST MARTIN'S
PARISH CHURCHES

Church Magazine *June 2026*



Miah yr6



LYNE & CO

Building & Renovation Company
 Quality building and carpentry work
 Bespoke joinery
 Painting and Decorating
 Capel: 01293 871008

Email: info@lyneandco.co.uk

View examples of our building and joinery work at:
www.lyneandco.co.uk

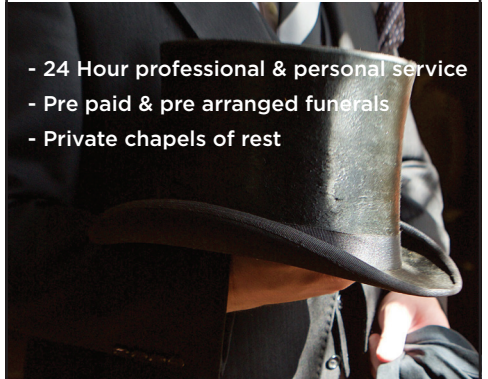


MULLARD

FUNERALS GODALMING SINCE 1897

INDEPENDENT FUNERAL DIRECTORS
 & MEMORIAL MASONS

- 24 Hour professional & personal service
- Pre paid & pre arranged funerals
- Private chapels of rest



01483 860279 • www.mullards.uk

121-123 High Street, Godalming
 Surrey, GU7 1AG



MJP Plumbing & Heating Ltd

Will do any job from a tap washer to refitting your bathroom.

Boiler repairs and servicing.

Gas safe registered.

Contact Mike on 07768 844276
 or mike@mjplumbing.com

SOLVING PEST PROBLEMS OTHERS CAN'T - Since 2008

From Gomshall

ALL PESTS: Rats, mice, squirrels, wasps, woodworm, rabbits, deer fencing, loft insulation clearance



PETER HIGGS

Surrey's highest rated pest control service on



- Ants 2 visits £172 +VAT
- Moles min 2 visits £60 +VAT per visit
- Rodents 3 visits £125 +VAT per visit
- Wasps £99 + Vat Guaranteed for the season

*quote "Wonersh" for these prices

For Homes & Businesses

www.pghbeegone.co.uk
sales@pghbeegone.co.uk

01483 273 478



PGH[®]
 PEST PREVENTION

Hivegrove, Kings Court, Burrows Ln, Gomshall, GU5 9QE

Visit our website



Proud members of
Checktrade.com
 Where reputation matters

Beegone[®]
 LIVE BEE REMOVAL

Inclusion of an advertisement in this magazine does not imply that the Church endorses, or takes responsibility for, any product or service provided.



June 2026

Vicar's letter . . .

Dear Friends,

Our world is a remarkable place! As we have recently celebrated the 100th birthday of David Attenborough, the naturalist, we wonder again at the beauty and diversity of our planet and are thankful for our environment. We are fed and sustained by the natural world and can marvel, along with those astronauts on the spacecraft Artemis, at the incredible way in which the earth is the perfect environment for life.

This reminds me of some verses from Psalm 8 – *“When I consider your heavens, the work of your fingers, the moon and the stars, which you have set in place, what is mankind that you are mindful of them, human beings that you care for them?”*

As human beings, when we are born, we are fed, supported and nurtured by others; we are looked after and helped to live. This same holistic approach is shown in the current church season running through June, known as Trinity. Using the image of God as three distinct persons, Trinity allows us to reflect on the creative nature of God, the saving work of Jesus the Son and the ongoing work and presence of God’s Holy Spirit.

The wonderful nature of God is that we are not created and left to fend for ourselves. We are given the opportunity for an ongoing relationship with our creator who understands us better than we know ourselves. Psalm 139 puts it beautifully – *“You have searched me, Lord, and you know me.”* (v.1) and *“Where can I go from your Spirit? Where can I flee from your presence?”* (v.7).

God the Father sent his Son to show us the way, but our everlasting guide is the Spirit, who is with us, within us and before us, at all times. What a comfort to know that we are not alone, we are not without help or hope; but we have that same creator God, who made this majestic planet, by our side always.

May you always know the presence of God with you.

With love,
David

June Diary

for St John's Church, Wonersh and St Martin's Church, Blackheath

Tues 2	9am	Morning Prayer
Wed 3	9am	Morning Prayer
Thurs 4	10.30am	Holy Communion (BCP)
Sun 7		1st SUNDAY AFTER TRINITY
	10am	All-Age Service
	10am	Sung Holy Communion
Tues 9	9am	Morning Prayer
Wed 10	9am	Morning Prayer
Thurs 11	10.30am	Morning Worship
Sun 14		2nd SUNDAY AFTER TRINITY
	8am	Holy Communion (BCP)
	10am	Morning Worship, with adult baptisms
Tues 16	9am	Morning Prayer
Wed 17	9am	Morning Prayer
Thurs 18	10.30am	Holy Communion (CW)
Sun 21		3rd SUNDAY AFTER TRINITY
	10am	Holy Communion (CW)
	6pm	Choral Evensong
Tues 23	9am	Morning Prayer
Wed 24	9am	Morning Prayer
Thurs 25	10.30am	Discovery Service
Sun 28		4th SUNDAY AFTER TRINITY
	8am	Holy Communion (BCP)
	10am	Holy Communion (CW)
	6pm	'Be Still with God'
Tues 30	9am	Morning Prayer
.....		
CW = Common Worship (2000) BCP = Book of Common Prayer (Traditional 1662)		

July

Wed 1	9am	Morning Prayer
Thurs 2	10.30am	Holy Communion (BCP)
Sun 5		5th SUNDAY AFTER TRINITY
	10am	All-Age Service
	10am	Sung Holy Communion



ST JOHN THE BAPTIST
WONERSH

Pray
with us

TUESDAYS 9 AM



Mid-week
Service

Join us for a traditional
and reflective service,
and stay for
refreshments afterwards.

THURSDAYS
10:30AM

Church Office

The Church Office (in The Vicarage) is open as follows:

Monday	9 am - 2 pm
Tuesday - Thursday	9 am - 1 pm
Friday	9 am - 2 pm

The office number is **01483 890266** (if outside office hours you may leave a message), or email office@wonershchurch.org.uk.

Copy Deadline for July/August 2026

Please submit articles for the July/August issue by **Tuesday 9th June**.

E-mail address for copy is magazine@wonershchurch.org.uk.

For advertising, please contact John Gosden (johngosden@aol.com or tel.502076).

Children and Families Work at St John's

After almost three and a half wonderful years as Children and Families Leader at St John's, I will be moving on at the end of the summer term, and returning to primary school teaching in September.

It has been an enormous privilege to be part of the lives of so many children and families within our church and wider community. From Sunday mornings and Kids Church, to toddler groups, family events and supporting new mums, I have loved the warmth, faith, honesty and laughter that we have shared together. I will hugely miss the children and families I've had the pleasure of getting to know.

In the meantime, all groups and activities will continue as normal while we actively look for someone to take on this role [see ad on p.9]. We are seeking someone with a Christian faith and experience working with children aged 0–10. Alongside an established Sunday children and families' community, the role also includes our toddler group, Chatterbox, and our postnatal support group, Mums, Bumps and Babies.

The joy of a role like this is the freedom to help the ministry continue to grow and flourish by bringing to it your own gifts and strengths. If this sounds like something you may be interested in, we would love to hear from you.

Clare



WSG

News from our Village School

wsg.surrey.sch.uk | [@MediaWsg](https://www.instagram.com/MediaWsg)

The Spring term was full of joy, fun and enriched learning at the school. The children enjoyed some wonderful trips and workshops including World Book Day, the Scholastic Book Fair, Primary Engineer Award, Young Voices at the O2, and running for charity dressed as reindeers to our wonderful Easter services at Christ Church Shamley Green.

We have continued our partnership with Wilder Schools, part of Surrey Wildlife Trust, and recently planted a wildflower meadow. The children love learning outdoors and in The Forest Lodge, and we can't wait to spend the summer engaging with nature thanks to our new equipment funded by the amazing PTA.

Sport continues to be a big part of our curriculum with a whole array of matches and activities taking place for children of all ages and abilities including 32 children in a dodgeball tournament at Glebelands; netball, football and hockey at Charterhouse; a dance day at Broadwater School; cross country, panathlon and sportshall athletics at Guildford Spectrum; and even the opportunity to compete in the Mini London Marathon!

Good luck to our Year 6 children who completed their SATS in May, and their final farewell events at Guildford Cathedral and Wintershall.

MUMS, BUMPS, & BABIES

Coffee, cake, and connection

A gentle, friendly space for mums of little ones from bump through to crawling.

A moment to breathe, to be heard, and to be cared for by a team who understand the highs and lows of early motherhood. Baby cuddles always on hand if you need a break!


TERM TIME MONDAYS
10AM-NOON

The Vicarage,
Wonersh Church
GU5 0PG

clare@wonershchurch.org.uk




Kids Church



St John's WonerSh

Bible Stories
Crafts & Activities
Games
Songs & Prayer
Friendship

Come & Join us at
The Vicarage,
St John's Church, WonerSh
Sundays, 10-11.15am

Guildford Food Bank (previously North Guildford Foodbank)



We have just come to the end of our financial year and our food parcel numbers show that demand is up 9% on last year and 34% up on 2 years ago. Your donations have made it possible for us to meet this demand and we are so grateful for everyone's support.

As we head into the summer, we are looking to provide additional one-to-one support to some clients who have been coming to us on a more frequent basis to ensure that they can move away from needing food parcels from us. We have a small team of experienced volunteers who will be providing this support.

Our requests, this month, are for:

Tinned Meat

Tinned Soup

Teabags

Jam / Honey / Peanut Butter

Cloths / Sponges

Deodorant (M / F)

In addition, we always need strong carrier bags / bags for life.

Donated items can be left in the foyer of St John's church, or in the crate on Rosie Couzens' doorstep (10 Little Orchard Way, Shalford, GU4 8JY).

If you would rather make a financial donation, please refer to our website: guildfordfoodbank.org/donate, which lists the ways you can donate (if you are a taxpayer, Gift Aid can be claimed by the Food Bank on personal donations).

Meet Sophie Bolton



After a very spontaneous move from Warwickshire to Guildford six years ago, I joined Wonersh and Shamley Green School as a newly qualified teacher. I arrived fresh-faced and ready to go after travelling around Asia, only to find myself starting my career right in the middle of a global pandemic! It wasn't exactly the start I'd imagined, but it was an interesting year to say the least!

I spent my first three years at WSG teaching Year 4. The first year was a learning curve for both myself and the children as we navigated another lockdown and learned to connect through screens. I absolutely loved Y4. At that age, children are in a wonderful sweet spot: they are becoming independent and enthusiastic, yet they're still young enough to be genuinely curious about everything they encounter.

I then moved up to Year 6, which has been a brilliant new chapter. Y6 is a challenge that keeps you on your toes, but a very rewarding one. There is a real sense of purpose in Y6 - preparing the children for their SATS, watching them realise just how much they are capable of, and eventually getting them ready for the big jump to secondary school. Some of the biggest highlights of the year are the ones that happen outside the classroom. Our residential trip to the Chichester coast each year is always a standout memory; and there's the total joy (and occasional chaos!) of the leavers' play in the summer term. Y6 is special: you really get to appreciate just how much the children have grown during their time at primary school.

One of the more unexpected parts of my teaching journey has been leading the French curriculum. I took this on in my second year, despite the fact that I hadn't taught a single French lesson in my life and my own GCSE French was a very distant memory! It's been a real learning experience, but a surprisingly enjoyable one! I've worked with some amazing colleagues from other schools to develop our curriculum and I'm really proud of where the subject is now - especially our links with pen pals in France, which has made the language learning feel really purposeful for the children.

One of my favourite ways to connect with the children across the school has been through running the school netball club. I love working with the Year 5 and 6 children on the court and seeing the school's genuine love for sport grow year on year. We've been lucky enough to win many games and tournaments over the seasons, but the real highlight for me is seeing the impact sport has on their confidence and teamwork.

I've also come to really appreciate the school's relationship with Wonersh Church. It's always a lovely moment in the term when we head over to the church for our services. I particularly enjoy the Remembrance Service with Y6: it's a moving way for the children to showcase what they've learned during our WWII history topic in the Autumn term and to connect with the village's history.

Looking back on that spontaneous move from Warwickshire, I feel incredibly lucky. WSG is a truly special place to work, defined by its amazing outdoor space, supportive staff, wonderful families, and, most importantly, the incredible children. I feel very lucky to be part of this village community and story, and I am genuinely excited for the many more years of teaching and learning to come!



Thinking of selling in Womersh?

Choosing the right agent makes a difference.

At Chantries & Pewleys we combine thoughtful marketing, carefully presented photography and genuine local knowledge to ensure every home is shown at its very best.

From character cottages to substantial family homes, we understand what buyers are looking for in Womersh and the surrounding villages.

If you're thinking of selling, we'd love to share our approach.

01483 304 344

shalford@chantriesandpewleys.com



**SPECIAL OFFER:
10% OFF WHEN YOU PRE-PAY
FOR 10 SESSIONS**

LOCATIONS
GODALMING, WOKING
OR YOUR HOME

START YOUR FITNESS JOURNEY
BOOK NOW!

CONTACTS:
07500871129
P.CAF.FITNESS@GMAIL.COM

SERVICES
1-TO-1
COUPLES
GROUPS (1 TO 4)

FOCUS
STRENGTH TRAINING
STRENGTH IN CYCLING
WEIGHT LOSS

MASON VOLLER LIMITED NICEIC registered

*Electrical Contractors - Domestic and
Commercial - Installation & Repairs.*
Builders Yard, Barton Road, Bramley, GU5 0EB
info@masonvoller.co.uk 01483 572763

RICHARD LEE Painter & Decorator

Experienced in all aspects of wall coverings,
special effects, interior and exterior decorating.
Over 30 years experience.
Tel: 01483 612055 / 07789685560 / 07717154392

R.A. ROBERTSON & SONS

High Street, Bramley.
Tel: Guildford 892207
sales@robbo.co.uk
TV - Domestic appliances - Sales & Service

WONERSH MEMORIAL HALL

Your village hall - for parties, classes, clubs
and now skittles evenings!
Online booking: womershmemorialhall.com
Call Hilary Solt 07931 516910
or Louise Healy 01483 898539

Online Safety and Screen Time - 'What I Wish My Parents Knew'

Parenting today can feel overwhelming - especially when childhood looks so different from what we grew up with. There's no manual, and it can be hard to keep up with the fast-changing digital world your child moves through every day.

The Children's Commissioner, Dame Rachel de Souza, has published a guide to help parents and carers navigate the challenge of managing children's everyday online habits: childrenscommissioner.gov.uk/resource/what-i-wish-my-parents-or-carers-knew-a-guide-for-parents-and-carers-on-managing-childrens-digital-lives.

Written with direct input from children and young people, including teenagers consulted in schools and the Commissioner's Youth Ambassadors, the guide is designed to make difficult conversations easier and help you support your child with confidence.



The guide covers setting boundaries around screen use, talking about harmful content, and building ongoing communication that goes beyond a one-off conversation. The voice of young people runs through it, including this from one teenager: *"Don't be afraid to be firm... If you are worried your child is seeing harmful content and you don't know what they're watching and it's affecting their behaviour, just take it that you know best, they don't."*

Some of these issues may feel far away for your children, but by setting expectations and boundaries at a young age we are teaching our children that we are interested in what they are up to online and on screens, and that boundaries are important for everyone in the family.

For those of you with young children, this screen-time guidance: beststartinlife.gov.uk/screen-time-under-5s is really useful in supporting screen habits for children under the age of five years old. If unwanted habits have grown and you want to address them, then use this resource to help you.

"I strongly believe that children with unbalanced screen time habits are more likely to find social situations difficult and are less resilient to challenges and setbacks. Many children are losing the ability to create their own games and their own fun as so much is structured for them. Being 'bored' is a good thing as it slows us down and it makes space for creativity and curiosity."

Tim Cheesman, Head of WSG School

Blooming Picnic in the Castle Grounds Saturday 6th June, 12 noon - 4pm

Bring your own picnic and enjoy an afternoon of entertainment from The Bandstand in Guildford Castle Grounds with [Guildford in Bloom](#). You can bring chairs or a blanket, but please no tables or gazebos. There will be a selection of stalls for refreshments, garden centre products and face-painting.

See visitsurrey.com/event/blooming-picnic-in-the-castle-grounds/251887101.

Children and Families Leader (15-30 hours)



From September, we're looking for someone who is passionate about helping our children (aged 0-11) grow in faith.

At St. John's we believe that children are the heartbeat of our community, bringing unfiltered energy and love of life to all they do. We long for every child and family to feel welcomed, safe and excited to explore who Jesus is.

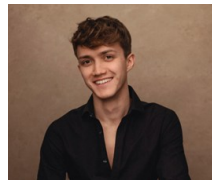
Could you lead and shape the continuing growth of our children and families ministry?

For further details, please contact clare@wonershchurch.org.uk

Organ Scholar Valedictory Recital Sunday 28th June, 3 - 4pm Guildford Cathedral, GU2 7UP

Join us for the final recital from our 2025–26 Organ Scholar, **Jozef Gaszka**. Jozef is a British organist specialising in organ performance. Born from Polish and Indian descent, he has forged a musical career as a soloist and church musician.

This special performance features a varied and exciting programme (details TBC), and marks your last opportunity to hear Jozef play before he leaves at the end of August.



New Charity Shop

Phyllis Tuckwell's new charity shop and donation centre in Pew Corner, Artington, is now open! Come and browse its pre-loved clothes, shoes, accessories, CDs, DVDs, books, games, toys, furniture and homeware.

It's open 9am - 5pm, Monday to Saturday, and is on a large site with parking. Donations are welcome at any time during opening hours.

Blackheath Focus

June 2026



**ST MARTIN'S
BLACKHEATH**

*Coffee morning,
Monday June 1st
10.30am-12.00pm
Blackheath Village Hall*

**St Martin's Blackheath**

Pray with us

**Wednesdays
9 am**

ST MARTIN'S BLACKHEATH
JULY 12TH
6PM



**For
all
who
wander**

**A VIGIL IN TAIZÉ STYLE
FOR WALKING AND WONDER**

**Outdoor
service**

Join us for a blessing of
our beloved heath.
Meet by the village hall.
Pets welcome

**JULY 26TH
10:30AM**

Bird Survey on Blackheath Common

Wednesday 10th June

We will meet at Blackheath Lane car park before heading out on site.

For more details, contact the Countryside Ranger, Lucie Poole: **01483 523002** or email parksandcountryside@waverley.gov.uk.

Blackheath Care Team

The Blackheath Care Team has a pool of volunteers for residents in Blackheath who need a lift to hospital appointments, or dentist or surgery appointments; the volunteers can also collect prescriptions, etc.

If you need assistance, please contact Penny Kirkwood on **07973 836987** (phone or text), or otherwise Alex Jones on **07810 486521**.

We are happy to help!

ALBURY MUSIC FESTIVAL
SAVE THE DATE
19TH JULY 2026



THE
ALBURY
MUSIC
FESTIVAL
2026

Discover the meaning of the Roman Catholic Mass – Public Talk Series

Join Benedictine monk Fr John Seddon OSB for a compelling seven-part Saturday series exploring the beauty and mystery of the Mass, based on Bishop Robert Barron's teachings.

27 June – A Privileged Encounter

25 July – Called out of the World

29 August – God Speaks our Story

26 September – Responding to God

31 October – Preparing for Sacrifice

21 November – The Real Presence Creates Communion

19 December – Eucharist: Sacred Meal, Sacrifice, Real Presence

Saturdays 10.30am–12.20pm

£12 per session (booking fee applies) • Advance booking essential – No tickets on the door

Book at www.ticketsource.com (search “Chilworth Abbey”)

Free refreshments from 10am • Free parking • All are welcome.



Village News

Wonersh & District Garden Club

During the summer months, visits are arranged for members on an out-and-about basis. If you would like to join the club, please contact Hilary Goodridge: email hilarygoodridge@ymail.com or tel. 01483 535108.

Our next meeting is on **Wednesday 3rd June**, a garden visit to Sleepy Hollow in Chiddingfold. The formal gardens include a knot garden with box hedges, a kitchen garden with greenhouse, and woodlands walk.



U3A Wonersh & District

Your local U3A, covering Blackheath, Bramley, Chilworth, Shalford, Shamley Green and Wonersh



What's on in June 2026 – join us for these activities

Mon 1	Pilates: Lawnsmead Hall, Wonersh	Wed 17	Table Tennis: Bramley Village Hall
Tues 2	Tai Chi (2 groups): Lawnsmead Hall	Thurs 18	Latin: Godalming
	Listening to Classical Music: Shalford Club Room		Pottery: Farley Green
Wed 3	Table Tennis: Bramley Village Hall	Fri 19	French: Godalming
Thurs 4	Mah Jong: Bramley Library Room	Sun 21	<i>(Father's Day)</i>
	Latin: Godalming	Mon 22	Pilates: Lawnsmead Hall, Wonersh
	Pottery: Farley Green	Tues 23	Tai Chi (2 groups): Lawnsmead Hall
Fri 5	French: Godalming	Wed 24	Coach Trip: Weald & Downland Living Museum, Chichester
Mon 8	Pilates: Lawnsmead Hall, Wonersh	Thurs 25	Line Dancing: Shalford Upper Hall
	Book Club: Selwyn Room, Parish Church		Latin: Godalming
Tues 9	Tai Chi (2 groups): Lawnsmead Hall	Fri 26	Art: Shalford Upper Hall
Wed 10	Table Tennis: Bramley Village Hall	Mon 29	Pilates: Lawnsmead Hall, Wonersh
	Pub Lunch: Ragged Robin, Godalming	Tues 30	Tai Chi (2 groups): Lawnsmead Hall
Thurs 11	Line Dancing: Shalford Upper Hall		
	Latin: Godalming		
Mon 15	<i>(No Pilates)</i>		
	Play Reading: Selwyn Room, Parish Church		
Tues 16	Tai Chi (2 groups): Lawnsmead Hall		
	Country Walk: meet Snooty Fox, Shalford		

Join us for some very interesting talks, visits and activities. Newcomers are welcome.
For further details, please phone Jacqui on 07814 379294 or visit:
<https://wonersh.u3asite.uk>



Help Nikita Hike 100km for MND

On 6th June 2026, Wonersh local Nikita Nicholson is trekking 100km through the Lake District to tackle Motor Neurone Disease in loving memory of her Dad.

I'm putting in the miles (and the blisters!)
to support the [My Name's 5 Doddie Foundation](#).

This cause is incredibly close to my heart.
Please help us turn our loss into hope for a cure.

When: 6th June 2026

Where: The Lake District

The Goal: To honour my Dad and fund a world free of MND

Every single pound makes the climb worth it. I want to ensure that, one day, no other family has to endure the pain of this disease.

Whether it's £1 or £100, your support means the world to me and honours my Dad's legacy.

Visit [justgiving.com/page/nikita-nicholson-1](https://www.justgiving.com/page/nikita-nicholson-1) to read my full story and donate. Thank you from the bottom of my heart.



Shamley Green Village Fête and Fun Dog Show

Saturday 13th June, 12 noon

Shamley Green Village Fête and Fun Dog Show is a traditional village fête with around 40 - 50 stalls of crafts, vintage items, tombolas, rides, coconut shy, dog show, Punch & Judy, cream teas, BBQ, pizza, ice cream, beer tent, dance, brass band . . .

Fun afternoon for all the family, including the dog!

Entry fee applies for those who enter the dog show.

For more information, please visit [sgvillagefete.com](https://www.sgvillagefete.com).

Shalford Repair Café Opening 12th September



Do you have something that's broken that you can't fix, but don't want to throw away? For example a toaster, kettle, lamp, heater or computer, damaged clothing, or even a small furniture item?

A new **Repair Café** is being planned for Shalford and the neighbouring villages of Bramley, Wonersh & Peasmarsh. Starting in September, every 2nd Saturday in the month our experienced volunteer repairers will be at **Shalford Village Upper Hall** to pinpoint the problem and try to fix it there and then for you, or advise on how it might be mended. While we are working on your broken item, you can enjoy a cuppa! There will be no charge for repairs, although we would appreciate donations. For more details, and to check progress with opening the Repair Café in Shalford, visit shalfordrepaircafe.org.uk. And if you have repair skills which you think we might be able to use, please email us at volunteer@shalfordrepaircafe.org.uk.



Open Gardens

Between May and August, over 40 gardens across West Surrey and North-East Hampshire will open to welcome visitors, raising money for hospice care charity Phyllis Tuckwell.



You can download a brochure showing locations and opening times of the gardens at pth.org.uk/open-gardens. If you'd prefer a printed copy, call **01252 729446** or email fundraising@pth.org.uk.

Church Walking Group

Our next walk will be on **Friday 19th June** – perhaps it will be hot!
Further details from Catherine Keech (catherine@keechonline.com).

The poster features a background painting of a rural landscape with a white house and trees. The text is overlaid on the right side of the image.

Dvořák: Mass in D
An informal performance
Saturday 13 June, 7.30pm
St Nicolas' Church, Guildford
Guildford Choral
Conductor Jonathan Willcocks
Entrance FREE!

Twinkle toes
 Mobile foot care clinic

MEMBER OF


Kirsten Hall MCFHP MAFHP
 07592 853178
 twinkletoesfeet@outlook.com

• All in the comfort of your home •

 **Wonersh Community Garden**

We are growing vegetables, flowers, and friendship and we'd love you to be part of it.

Join us Saturday mornings
 10 am – Noon
 St John's Wonersh, GU5 OPG

Everyone's welcome, no experience needed.



Get in touch with Calum via
office@wonershchurch.org.uk

Ironing Fairy
 SAVE TIME - ENJOY LIFE

Laundry
 Dry Cleaning
 Ironing
 Bulky Items

Fresh, Fast Laundry Delivered.
 Free Collection & Delivery
 Fast Turnaround

01483 428044 | www.ironingfairy.net



 **Seymours**

TOP 6 TIPS TO SELL YOUR HOME
 in Wonersh & Blackheath

- 1 Strong first impressions**
 A tidy front garden & driveway goes a long way.
- 2 Neutral tones. Natural light**
 Makes rooms appear more bright, spacious and inviting.
- 3 Uncluttered rooms**
 Makes it easier for buyers to imagine their own plans.
- 4 Fresh Flowers**
 Sets the tone for a well cared for home and adds energy.
- 5 Subtle touches**
 With a welcoming scent. It can create a positive emotional response.
- 6 Summer fair footfall**
 Take advantage of the increased footfall with a 'For Sale' board.

SPEAK TO US FOR TAILORED ADVICE ON SELLING YOUR HOME

01483 576833 | sales@seymours-guildford.co.uk | 217 High Street, Guildford, GU1 3BJ



Memory Lane

The Memory Lane team and their guests are still recovering from the "Musical Memories" concert which they performed at the end of April, with the help of a new Dementia Choir this year. The audience were delighted with this joyful event and kindly contributed to a generous £350 donation to Alzheimer's Research. During May, Memory Lane had their usual meetings in the Cranleigh Arts Centre and a refreshing Walk Around the Park to keep up with nature and the fresh wildlife this year.



This month starts with a talk to carers by Rosemary Hurtley entitled "What Makes You Tick", at 2pm on **Monday 1st June**. This presentation is addressed specifically to all the guests caring 24/7 for their partners who are experiencing dementia; so enabling them to rediscover life energy and vitality through health conditions. Whilst their carer partners are having this session (giving them a two hour break!), those guests experiencing dementia will be entertained and stimulated by the Memory Lane team led by Liz Westaway, who was responsible for forming the Dementia Choir and producing Musical Memories.



Further excitement next month when, on **Monday 6th July**, all the guests and volunteers will be led in playing Indonesian Anglunks together by Kundi Scully [*left, playing the Irish harp*], one of the Memory Lane guests.

Memory Lane meets at 2pm in Cranleigh Arts Centre on the 1st and 3rd Monday every month. There is a walk around Knowle Park in between meetings at 10.30am every 2nd Monday of the month.

If you would like to join the joyful team of volunteers, or need further information, please telephone Memory Lane: 01483 274398, or email mamwild@aol.com.

Surrey Hills Summer Concert

Sunday 28th June, 7pm

**St Nicolas' Church,
Guildford, GU2 4AW**



An evening of chamber music without boundaries

With a change of direction this year from their usual concert formula, the two award-winning Surrey Hills choirs will present Vivaldi's 'Gloria' accompanied by string quartet, oboe and trumpet; as well as two choral favourites by Karl Jenkins. The concert will conclude with a mix of songs from all styles and eras, from Renaissance polyphony to Bob Dylan.

Tickets are now available from singsurreyhills.com - our last 3 concerts sold out, so booking in advance is highly recommended!

The Life of Christ

18th - 20th June, 10am - 3.30pm

Wintershall, Bramley, GU5 0LR

Discover the wonder of Jesus' life with an unforgettable event for all the family. The Life of Christ is a play like no other, placing you in the middle of an immersive open-air theatre experience.

See the remarkable events of Jesus' life re-enacted as you follow the actors around Wintershall's beautiful lakes and ancient woodland - bring a picnic and blanket / chairs.

Book now at wintershall.org.uk/event/life-of-christ.



Ordination of our New Priests

Saturday 27th June, 10.30am

Guildford Cathedral, GU2 7UP

Our curates, **Lori** and **Jan**, have now served one year as deacons in the Church of England. At the end of June they will both be ordained priest by the Bishop at a service in Guildford Cathedral, which means that they will then also be able to lead Communion services. So Lori will be leading her first Communion service in St John's, Wonerh, on **Sunday 28th June!**

All are welcome to come to the Cathedral service to support them both in this new step on their journey.

Celebrating 65 Years of Guildford Cathedral



GUILDFORD
CATHEDRAL

This year, Guildford Cathedral celebrates 65 years as one of Surrey's most iconic landmarks: a symbol of community, resilience and vision.

Though consecrated in 1961, its story began in 1927 when local people envisioned a great church overlooking the town. Built on Stag Hill through public support, thousands donated bricks, earning it the name "The People's Cathedral". Designed by Sir Edward Maufe, it blends modern design with traditional craftsmanship, creating a space of light and calm.

For 65 years, it has been at the heart of community life - hosting worship, music and celebration - while welcoming visitors from around the world. As it looks to the future, the Cathedral is improving its facilities, including its '**Spend a Penny, Pay a Pound Forward**' toilet refurbishment campaign. To find out more or donate, visit guildford-cathedral.org/support/spend-a-penny-pay-a-1-forward.

Big Band Jazz

Sunday 14th June, 1 - 5.30pm



The Hogs Back Brewery, Tongham, GU10 1DE

Celebrate the opening of your new Hospice this year, with a glass of Hogs Back beer and music from 16-piece jazz orchestra The Barnes Big Band. Refreshments and food available to purchase, raffle plus much more! All proceeds will raise money for Phyllis Tuckwell.

Tickets £25, including a welcome drink (a pint, glass of Pimm's or soft drink) - buy online at pth.org.uk/jazz-at-the-hbb, where you can also find more details.

News from Bramley Library



Defibrillator

The defibrillator which was located in the library reception has now been moved outside the entrance so that it is available for use by the public at all times. If needed when the library is open, library volunteers can provide a code - for use when we are closed, it will be necessary to dial 999. Instructions are shown on the defibrillator.

Dyslexia-friendly Books

The library has invested in a selection of Barrington Stokes dyslexia-friendly books - do come in and browse the display in the Junior section.

SHAMLEY GREEN GARDENING CLUB
SHAMLEY GREEN
OPEN GARDENS
SATURDAY 6TH JUNE
1pm to 6pm
9 beautiful gardens for you to visit around the village
Tickets £10 from Arbutnot Hall on the day
Or £8 in advance from pth.org.uk
Under 16s FREE
Parking on the Green
Refreshments
ALL PROCEEDS TO THE
PHYLLIS TUCKWELL
HOSPICE

SIR GEORGE GILBERT SCOTT & ST BARNABAS, RANMORE
Illustrated Talk by Professor William Whyte (Oxford)

Saturday 4 July 2026 • 10.30am – 12 noon
St Barnabas Church, Ranmore, Dorking RH5 6SP

Discover one of Surrey's most striking Victorian churches and the architect who shaped 19th Century Britain

£8 SCPT members • £12 others • 3 for £30

Advance booking essential
www.ticketsource.com (search "Ranmore")
(booking fee applies)

Free refreshments • Free parking

Proceeds to the Surrey Churches Preservation Trust and St Barnabas, Ranmore

Photo courtesy St Barnabas, Ranmore

The Stantons and the Wey & Arun Canal

Just a short distance from St John the Baptist church, to the left of the road to Bramley, is the cul-de-sac known as Stanton's Wharf. This was, for a substantial part of the C19th, the site of a wharf on the Wey & Arun canal. The origins of the canal go back to 1653 when the River Wey Navigation, founded by Sir Richard Weston of Sutton Park, was constructed to provide a navigable waterway between Guildford and Weybridge on the River Thames, making it one of the first British rivers to be made navigable. The Navigation was later extended to Godalming.

The 18.5-mile Wey & Arun Junction Canal was proposed to join the Wey Navigation, at Stonebridge Wharf in Shalford, to the River Arun Navigation near Pulborough, effectively creating a secure navigable inland waterway between London and the south coast, especially Portsmouth. This avoided the much longer sea route which had been the alternative for transporting heavy and bulky loads, and the threats from French ships during the Napoleonic wars. The canal, the Act for which was passed in 1813, included 23 locks, 35 bridges, 8 wharves, 5 lock-keepers' cottages and 2 aqueducts.

The official opening, on 28th September 1816, was viewed by large crowds from Womersley and Bramley at Bramley Wharf. Four horse-drawn barges carrying officials, company shareholders, a brass band, the Mayor and Aldermen of Guildford and Lord Egremont, the promoter of the canal scheme, sailed along the waterway on their way to Guildford, where a "sumptuous banquet" awaited them at the White Hart Inn.



While the pomp and ceremony took place at Guildford, the practical day-to-day management of the canal was left to Mr James Stanton, the wharfinger, based at Bramley Wharf where there was also one of the lock-houses and the office where traffic would be registered for the collection of tolls. James Stanton also established his own carrying company. Materials carried on the canal included foodstuffs



headed for London, coal, wood, quarried stone, chalk and, occasionally until 1838, gold bullion from Portsmouth. In the late 1850s William Stanton took over the wharfinger role, and the running of James Stanton & Co., from his father James. The photo opposite shows William in his familiar high hat at the Bramley Wharf in about 1870.

However, the Stantons' company came under threat due to the limited success of the canal. The anticipated volume of goods to be transported along the canal had never fully materialised, falling well short of projections. But the final blow was delivered by the coming of the railways, as the Horsham-Guildford and London-Portsmouth lines created serious competition. In 1868 an Act of Abandonment to close the canal was passed, but William struggled on until his death in 1872. William's executors, loath to shut down the business after 50-plus years in the hands of the Stantons, kept the business running for a short while, but on 27th June their barge "Active" made the last journey to Bramley.

Womersley History Society



Birtley House Nursing Home

Exceptional care in an idyllic setting - since 1932

Independent living, respite care, nursing care, long term care, and end of life care within a beautiful Surrey Hills landscape

www.birtleyhouse.co.uk • Birtley Road, Bramley, GU5 0LB • 01483 892 055

Bullimores



ESTABLISHED
1928

Accountants for Life

- Tax
- Accounts
- Probate
- Inheritance Tax & Executorship

Bullimores LLP licensed to carry out the reserved legal activity of non-contentious probate in England & Wales by the ICAEW



For advice, call us on: 01306 880880 | Email: partners@bullimores.co.uk | Web: www.bullimores.co.uk



ABACUS



Wonersh Pest Control and



Wonersh Wasp Control



Pest Control you can count on
Telephone: 01483 299307

Inclusion of an advertisement in this magazine does not imply that the Church endorses, or takes responsibility for, any product or service provided.